

## REDUCED TEE 90°

03 Update - 06/2023

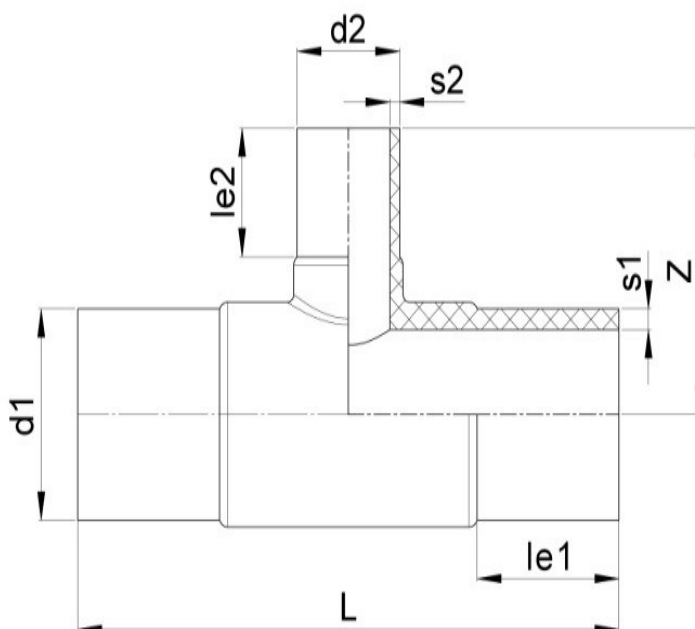
### TECHNICAL DATA

Article No	001 117 0042 0228
d1 (mm)	225
d2 (mm)	160
L (mm)	527
le1 (mm)	125
le2 (mm)	103
Z (mm)	242
s1 (mm)	20,5
s2 (mm)	14,6
Weight (Kg)	9,220
Box Quantity (pcs)	2
Box Dimension (pcs)	48x56x37

### IDENTIFICATION OF PRODUCT

D(mm)	225-160
SDR	11
RAW METARIAL	PE 100
PRESSURE CLASS	16 Bar Water 10 Bar Gas
TRADEMARK	NTG
EXECUTION	Injection Moulded
STANDARD	EN 12201-3 EN 1555-3 AS /NZS 4129

### INJECTION MOULDED



### SPECIFICATION

Long Spigot

Tolerance on diameters and thickness according to the standards. The other dimensions are specialized. Tolerance  $\pm 5\%$ . NTG PLASTIK reserves all the right to change any information without giving prior notice. The production, distribution and utilization of this document without explicit authorization is prohibited.